

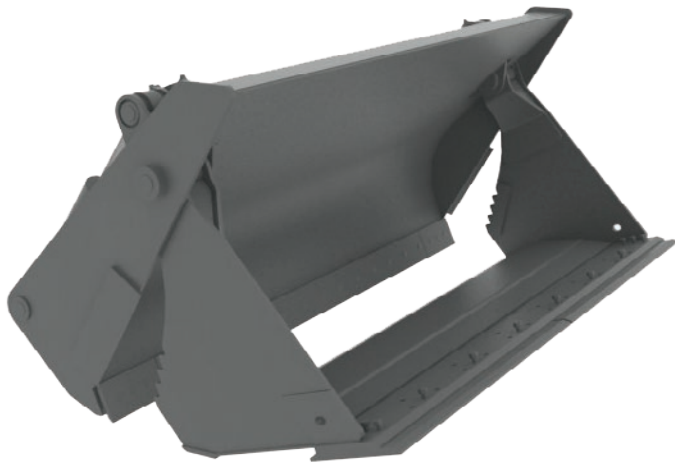


# Heavy Construction **ATTACHMENTS**

# GEM

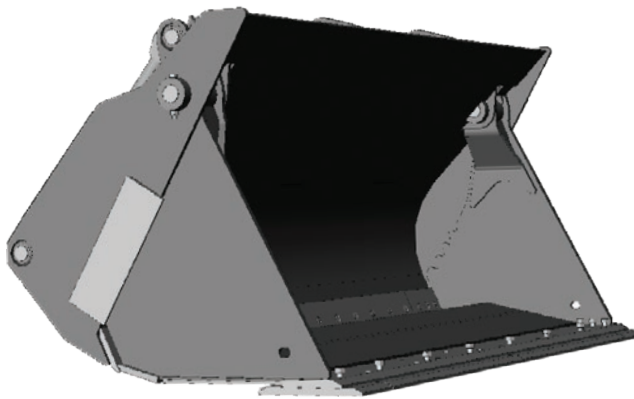
## MP

## **MULTI-PURPOSE BUCKET**



Versatile in handling excavating, grappling, loading, and top dumping.

- Equipped with standard bolt-on moldboard cutting edges; heat treated steel pins and bushings; heavy duty cylinders with protected hydraulic lines and greased pivot pins.
- Double bottom clam floor design provides greater strength and durability.
- Clam-front cutting edge drilled to OEM standard wear specifications.
- Third function loader hydraulics and jumper hose kits required for operation.



Available as Quick Coupler and Pin-On Style Mounting.