

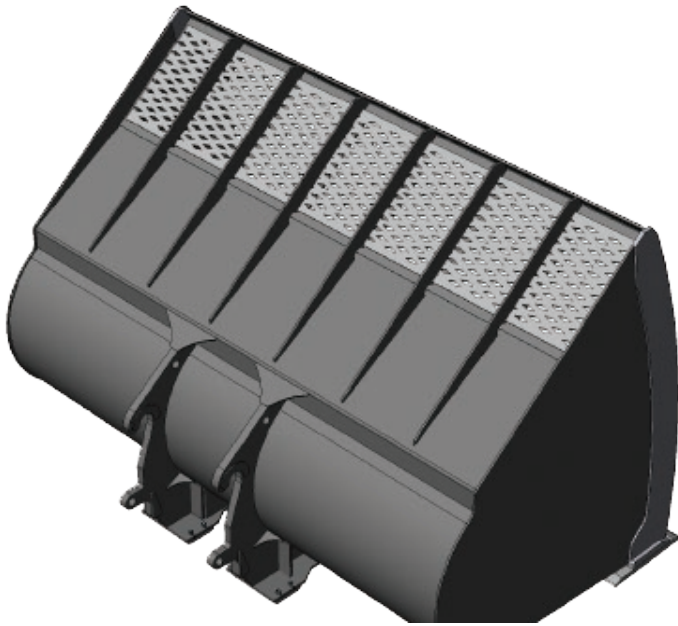


# Heavy Construction **ATTACHMENTS**

# GEM

## MHWC

## **MATERIAL HANDLING WOOD CHIP BUCKET**



- For use in the lightweight wood chip application.
- Due to material light weight, buckets can be a much larger capacity.
- Large reinforced mesh “windows” built into spill guard for added operator visibility.
- Extra reinforcement where needed to insure long bucket life.
- Uses standard OEM Bolt-On Edges.

Available Quick Coupler and Pin-On Style Mounting

