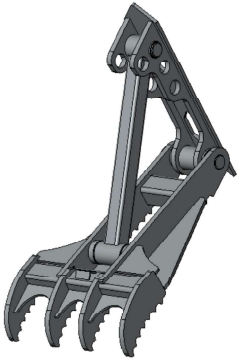




Heavy Duty EXCAVATOR THUMB

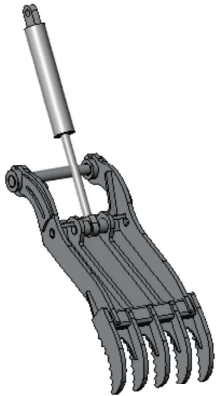
GEM

THUMB DESIGN FEATURES



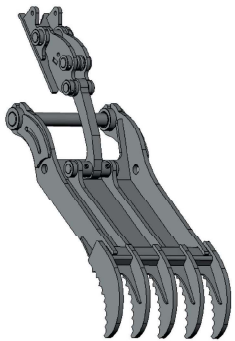
Weld-On Fixed Thumb

- Strong & Durable
- Versatile operation due to multiple positioning ability



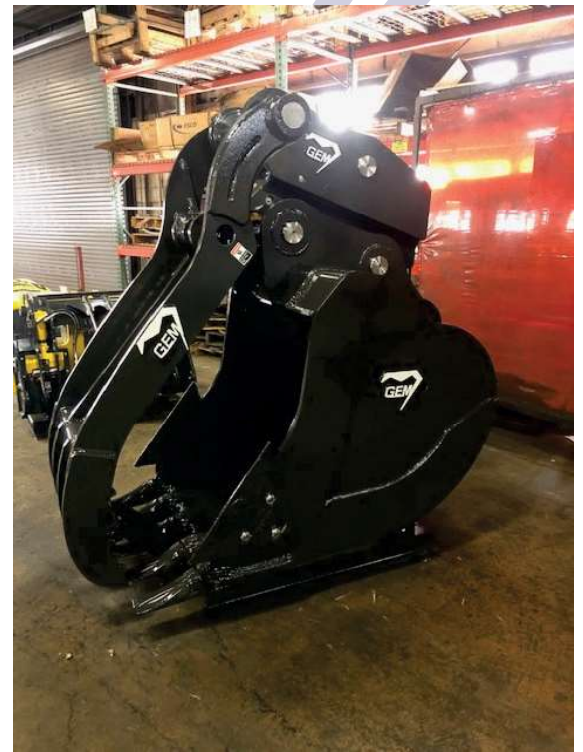
Weld-On Hydraulic Thumb

- Hydraulically operated for optimal thumb positioning
- Heavy duty cylinder for extended life.



Progressive Link Hydraulic Thumb

- Allows full rotation
- Hydraulically operated for optimal thumb positioning
- Heavy duty cylinder for extended life



* For use with or without coupler.
Must be specified when ordering